

Juyii Joseph Lee

Principal · ECG inc. Landscape Architects & Planners



Mr. Lee, a landscape architect with 50 years experience in Seattle and Taiwan and is recognized for his skills capturing the vision of the community.

In 1986, the National Construction Research Association of Taiwan invited Mr. Joseph Lee to participate in a seminar on public works quality. He presented concepts related to cultural inheritance, the construction of natural and human environments, landscape management and ideas to promote healthy living environments. Mr. Lee put forward an action plan to address Taiwan's urgent need for an improved landscape environment – he formed a team to complete the following important projects.

Lee has been actively participating in environmental and landscape advocacy. An example is the "Taiwan Landform Transformation Movement," promoted by the Executive Yuan Cultural Development Committee (2005). Lee served as a founding member and the fourth chairperson of the Taiwan Landscape Society (2006). He assisted in promoting the legislation of the "Environment and Landscape Law" to promote the function of environmental landscape in local government regulations; in response to the 2023 "Public Space Urban Design Co-creation" plan launched by the Industrial Bureau of the Ministry of Economic Affairs.

During his career, Lee's groundbreaking approach resulted in the stewardship of critical landscape resources in Taiwan and the United States. His visionary community-based approach resulted in the improvement of the quality of living for all.

Taijiang National Park Strategy Development and Master Plan (2011)



Mr. Xu Tiancai, then Mayor of Tainan, worked with local community to unveil the Taijiang Planning Workstation.



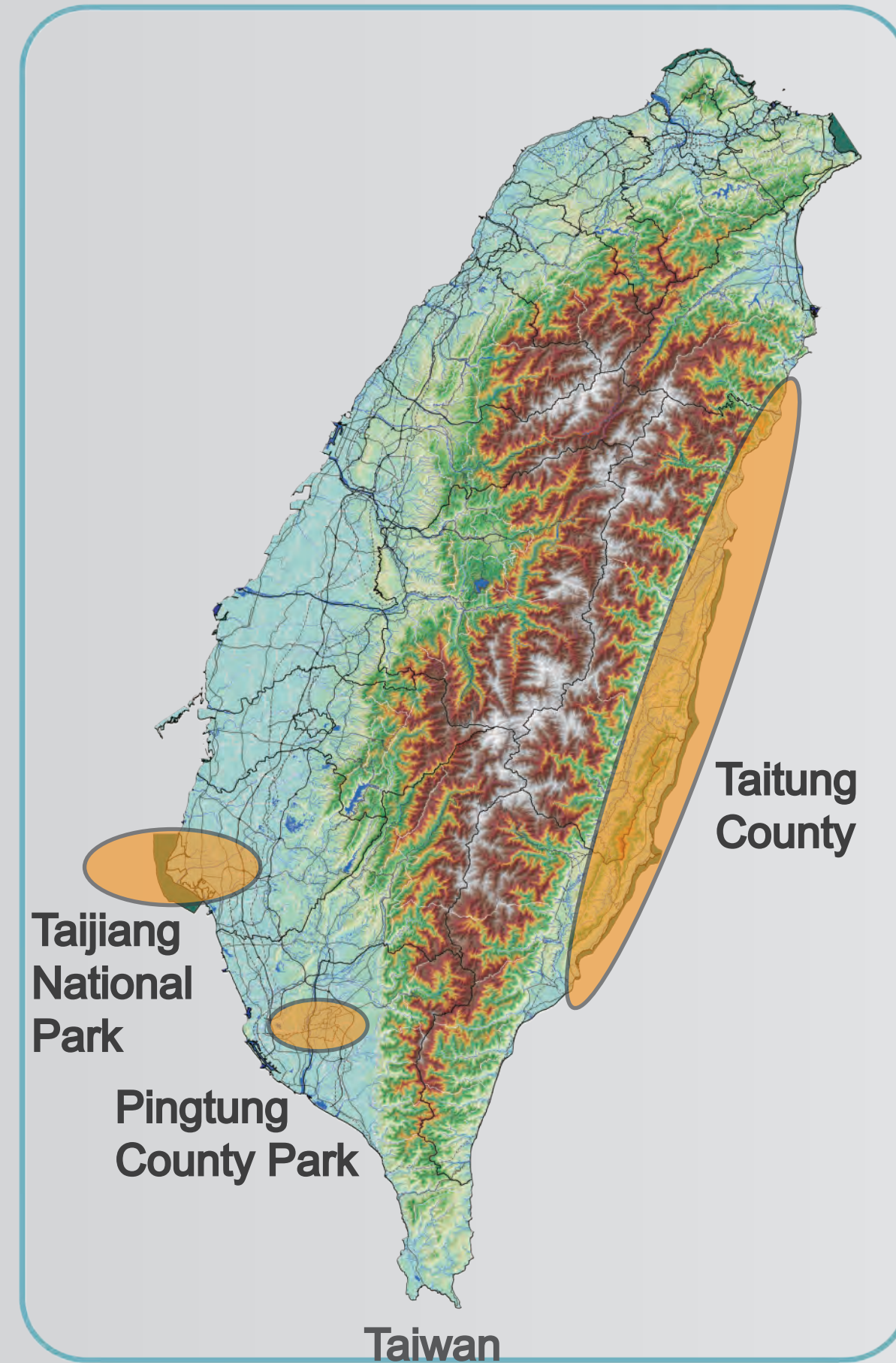
Taijiang is rich in fish and salt resources, and Yantian next to Yantian Ecological Village often provides various salt-making experience activities for students to participate in learning.



Bamboo Raft Gangxi is a former shipping hub and an artificially dug canal, the waterway next to the public temple is an important starting point for ecological guidance, and there are three kinds of mangrove plants such as red sea olive oil, olive plum and sea tomato winter green waterway.



The lagoon and Sandbar are important landscapes of Taijiang National Park, and the lagoon is also a farm for oyster farms.



Taitung County Design Guidelines and Landscape Improvement Master Plan (2014)



In front of the Toyama Fish Protection Area are tourists and residents who desire to be close to the sea, and in the back is a development with a high visual impact too close to the beach, which is the result of a mistake before the local participation was integrated.



Together with foreign experts Yamazaki Ryo, Jim Brennan, and domestic expert Yu Zhao-qing, they went deep into the Nanzhuhu tribe to find solutions for the transformation of the landscape by visiting the examples of local self-creation.



Peter Morehead, an expert from Permaculture who has worked in Longchang, explained the agricultural specialty station created by using local materials such as betel nut, bamboo, thatch, driftwood and other local materials with the community.



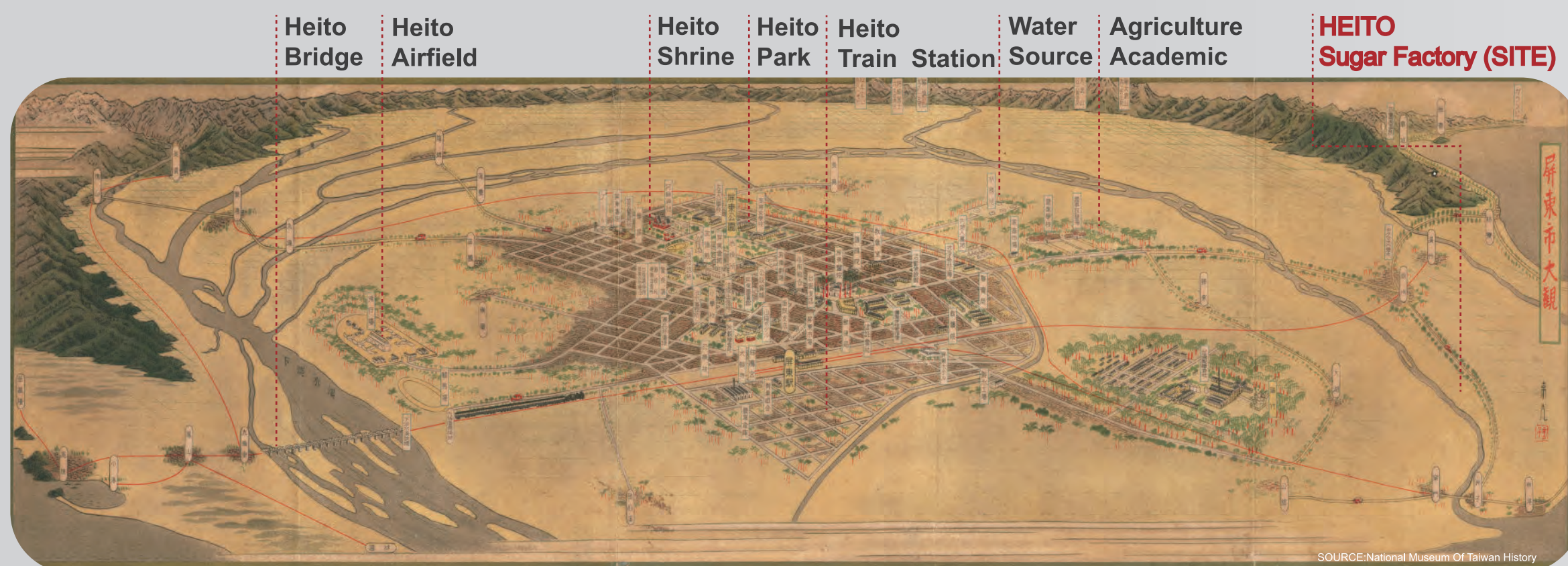
The inhabitants, settlers, administrators, and planners of the Touraine tribe settled together in Touraine for the inventory of the site.



Japanese community designer Yamazaki Ryo, American landscape architect Jim Brennan, Director Lin Xinyi of the East Management Office, domestic scholars including Yu Zhao-qing, Wang Guang-yu, etc., and Permaculture expert Peter Morehead also diagnosed the landscape topic for the East Coast.

Pingtung County Park (2019)

HEITO 1909 Site History

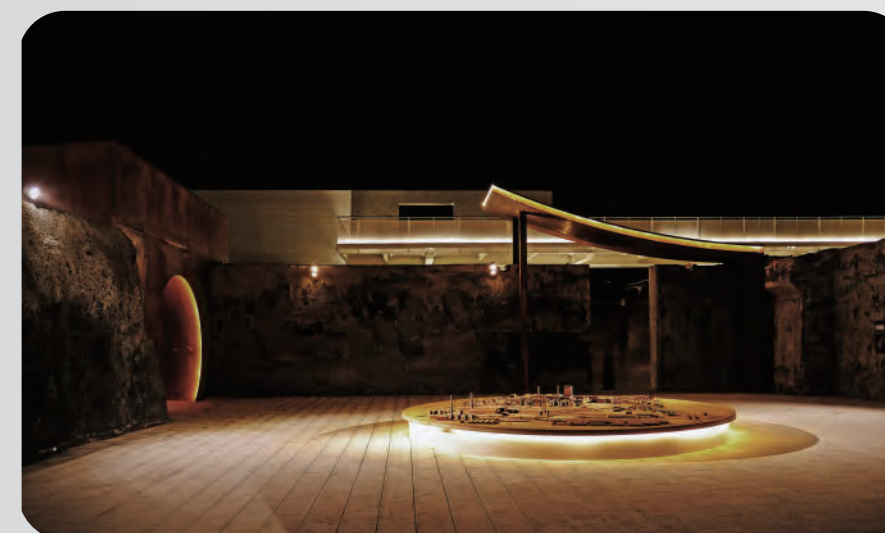


1895-1994 / A City Born From Sugar

During the 16th colonization era, sugar was a profitable commodity. The Dutch East India Company developed the sugar industry in Taiwan due to its geographical location and climate.



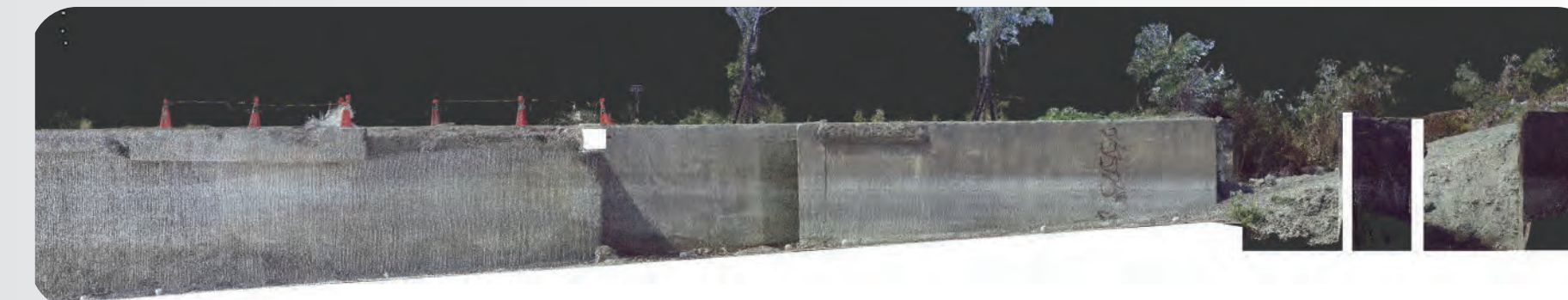
Lights and pool reflection at night, harmony and tranquility.



Pit space, new structure, echoing the fusion of old and new.



The old pit space, rediscovered.



Drums, gongs, music, encore cheers.



Youren Shengu Pingtung County Park Dancing Together with Heaven and Earth.



Learn about and remember the city's past.



The old purification pool has been transformed into a recreational space.