

ASPECT Studios

ASPECT Studios is recognized as one of the world's foremost public domain design practices, built from a team of Landscape Architects, Urban Designers, Strategists and City Makers.

We have a team of professionals who are both design and people focused. We have created some of the most memorable public realm experiences around the world.

A key component of these successes has been our understanding of how people use public space and a deep understanding of the influences, pressures and stakeholders that have on the qualities of these spaces.

Underpinning these leading designs is the strategy, understanding and knowledge provided by ASPECT Studios, who bring strategic and urban systems approaches to every project with a keen belief in the greater public benefit with a practical understanding of delivering the very best outcomes. ASPECT Studios has over 25 years experience in delivering and curating significant public realm, with studios in Sydney, Melbourne, Adelaide, Brisbane, Perth, Shanghai, Guangzhou, Ho Chi Minh City and Dubai. With over 200 staff we have significant resourcing and the specialists skills to deliver a world's best design project.

Stephen Buckle

Studio Director at ASPECT Studios



Stephen Buckle is an influential Designer, Landscape Architect and Urbanist recognized for his bold city shaping projects that look to challenge and disrupt the mundane, carry impact and meaning.

For over two decades Stephen's thinking has orientated towards the complex social, environmental, and technical challenges faced in some of most densely urbanized and populated cities in the world. His portfolio of works that spans diverse geographies, cultures, and climates.

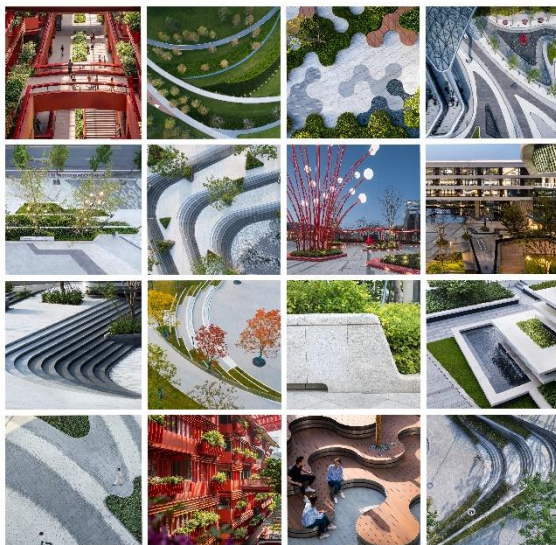
While all his designs are derived from the same hand, each strives to stand unique in place and time, drawing reflections from his perception of humanistic influences such as people, place and culture, and more contextual influences of environment, climate, and land. Each design endeavors to deliver an authentic, sustainable, and unique response.

Stephen's designs have gained the highest accolades, winning multiple international awards and are regularly published in international media. He often supports universities and educational institutions and is regularly invited to speaking events and design media interviews.

As a Studio Director and creative lead at ASPECT Studios Stephen actively leads the design of projects across Asia. His attention to detail and focus on quality and covers all aspects of the studio culture including design, teams and business. With a dedicated passion his work ethic, philosophy and energy motivates those around him to continually strive for excellence and innovation in all aspects of their work.

His influence, design and thinking has helped guide and forge the strategic direction and portfolio of the ASPECT Studios in Asia.

Projects Collection



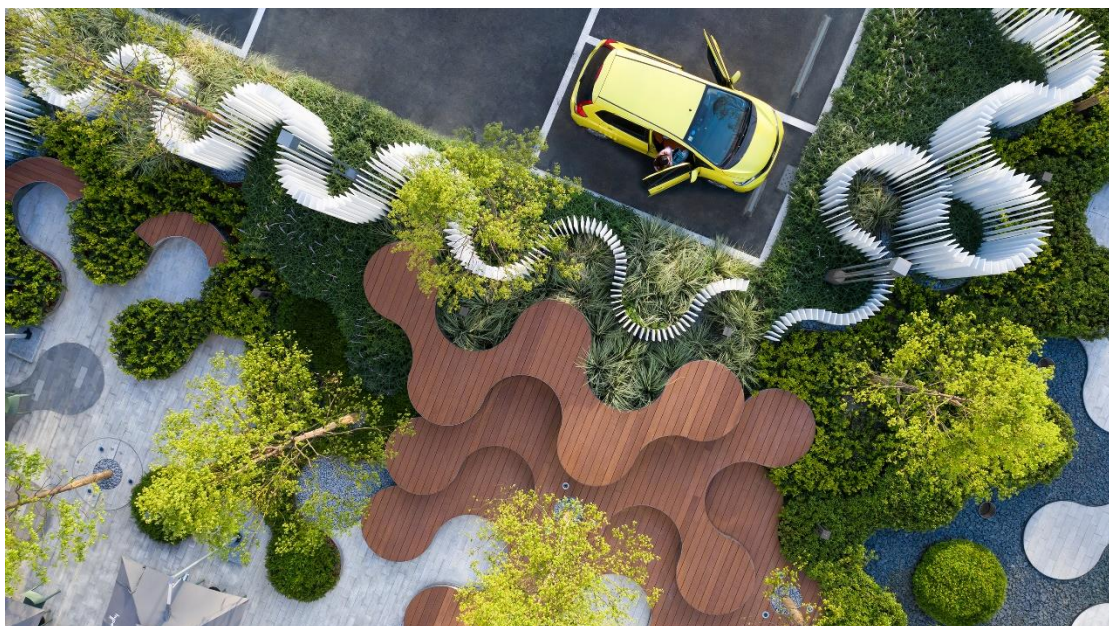
Notable projects:

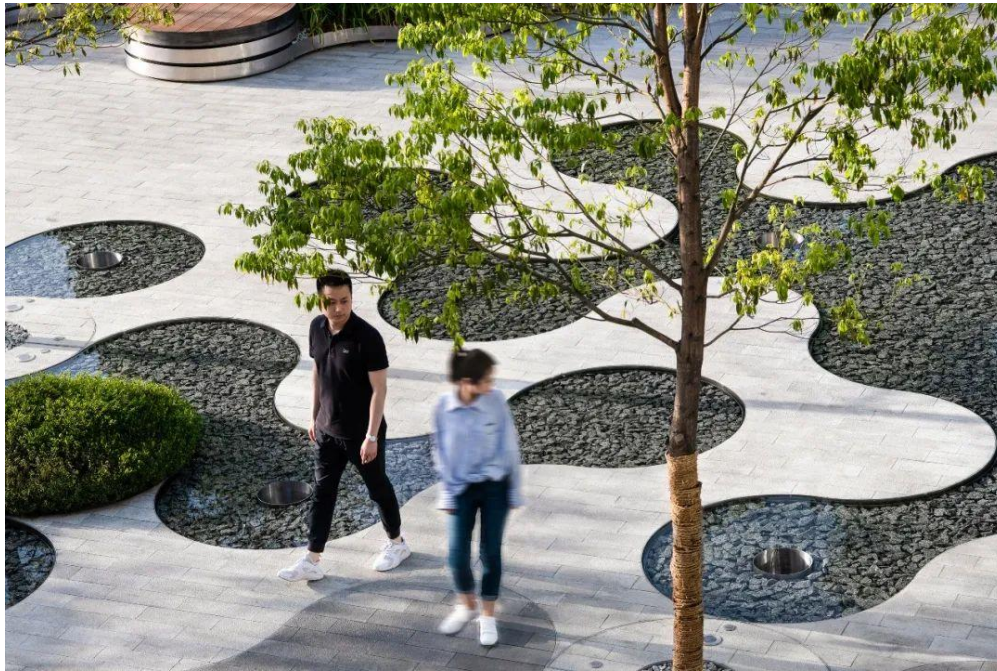
The Urban Gallery Hyperlane, Chengdu, China

Hyperlane is a 2.4km multi-level linear sky park, youth culture and lifestyle destination at the heart of the Sichuan Conservatory Of Music University in Chengdu. It establishes a vibrant and fun youth, music and life orientated linear space, linking the local transportation hub with the university community and campus in Chengdu. The Urban Gallery, the Initial phase of the project has recently opened.

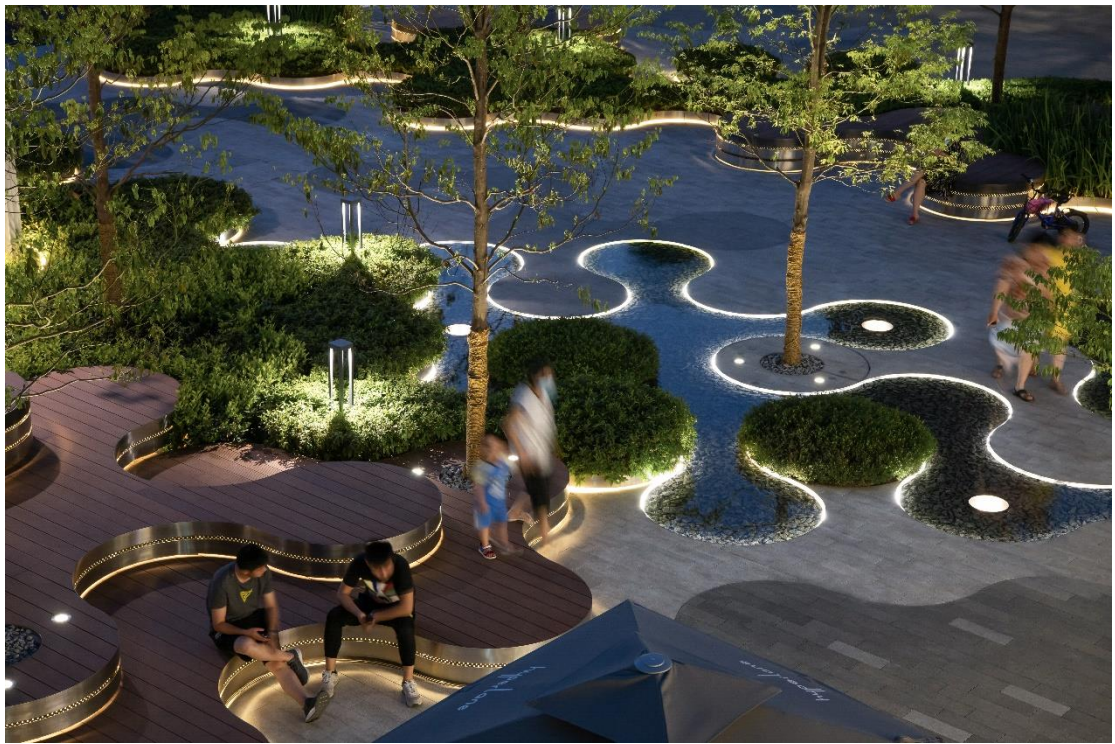


Hyperlane is invested, built, and operated by the core team that once operated Chengdu Taikoo Li project. The overall planning and design intent is to create high standards and high-quality design. 60% of the project is self-sustaining, adheres to the long-term business philosophy, provides professional support, and realizes long-term commercial value.





The Urban Gallery is the first phase of the entire project and represents the new age and mindset of commercial development, one that stems from a clear understanding that the success of a development isn't defined by short term commercial gains, but with attention to socially and environmentally orientated experiences that add meaningful value, experience and delight to the lives of the community.





Hyperplane represents leading thinking and a new consciousness within the Chinese development industry, one that understands that a focus on people, rather than sales, and in turn can bring long sustained commercial success. Gone are the days of stark empty plazas void of trees and shade to achieve unhindered views of facades. The collaborative thinking and commitment from client, architect and landscape architect led to the creation of an engaging socially orientated urban environment, that has provided meaning, experience, and moments of delight.



Photography: Lu Bing

The Ring, Chongqing, China

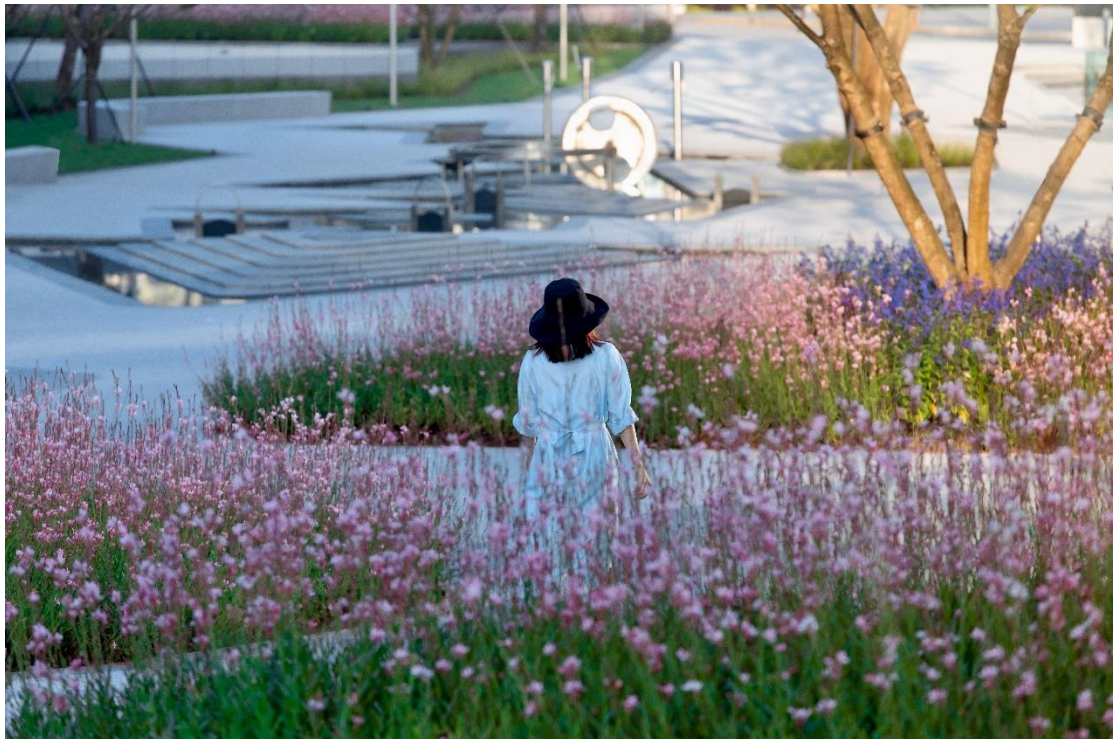
Nestled in Chongqing's urban heart, we have crafted a journey through fantasy and natural wonder at The Ring, a landmark community-oriented retail destination.



The Ring pushes the boundaries of the traditional retail environment, which has been turned on its head in recent years by online shopping culture and the pandemic. As the first of Hongkong Land's new experience-based retail destinations, the project shifts the emphasis from commercial exchange to social exchange and connection to nature. The provision of much-needed accessible public open space, a multitude of facilities, and unique indoor and outdoor experiences are tailored for the enjoyment of a diverse community.

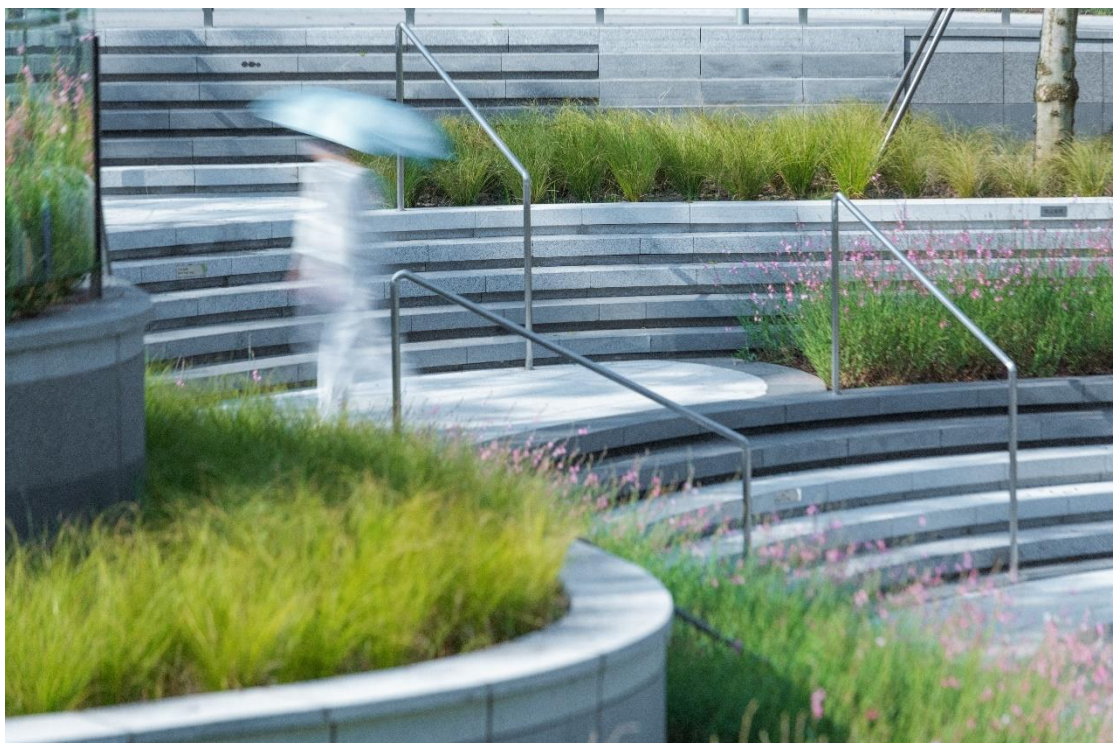


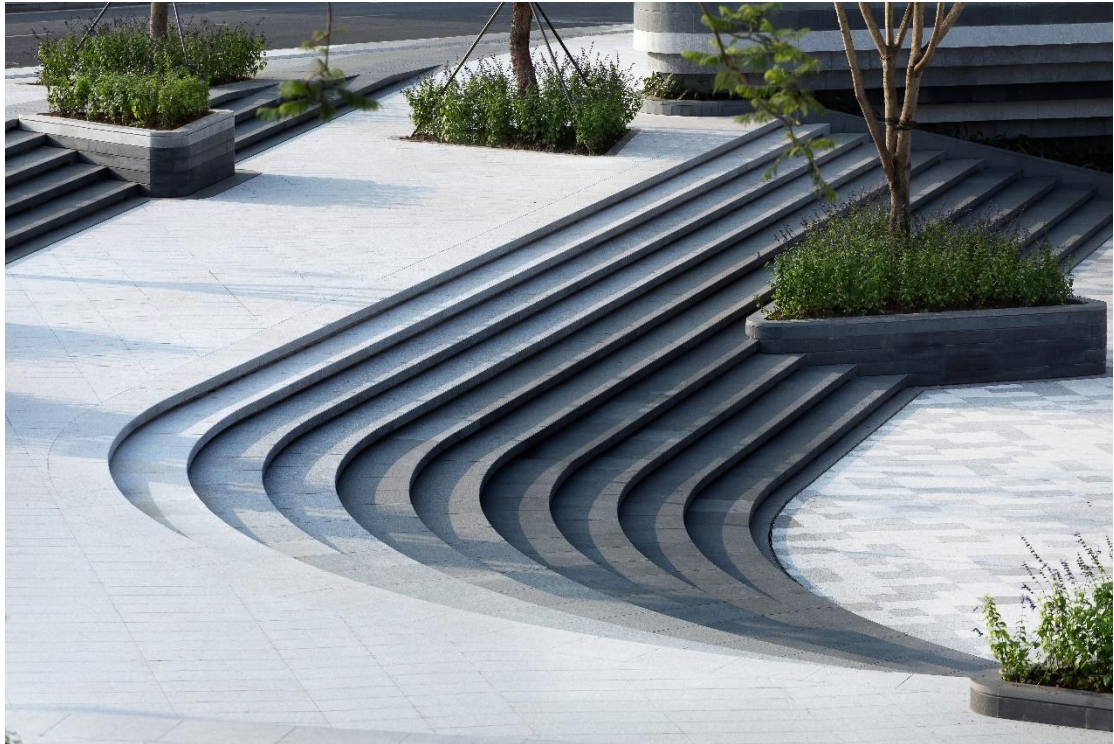
In a city as dense and as large as Chongqing, the reinsertion of nature back into urban life requires an imaginative solution. Our design spins a narrative inspired by the natural environment, with visitors embarking on a multi-dimensional voyage from the moment they arrive.





This journey begins in the urban arrival park, which mimics the dreamy undulations of the sea current. Locally sourced materials have been incorporated to reflect oceanic characteristics and movements. A metaphorical school of “manta rays,” sketched out in groupings of facilities, spaces, lookouts, experiences and shaded seating planters, reflects the idea of community.





The Ring is a demonstration of how ASPECT Studios recontextualizes city life with its urban projects. The grounds of the complex take visitors on a journey that elevates the retail experience, while at the same time expanding what that experience is, and reimagining what it could be.



Photography: Wang Wenjie, xf photography

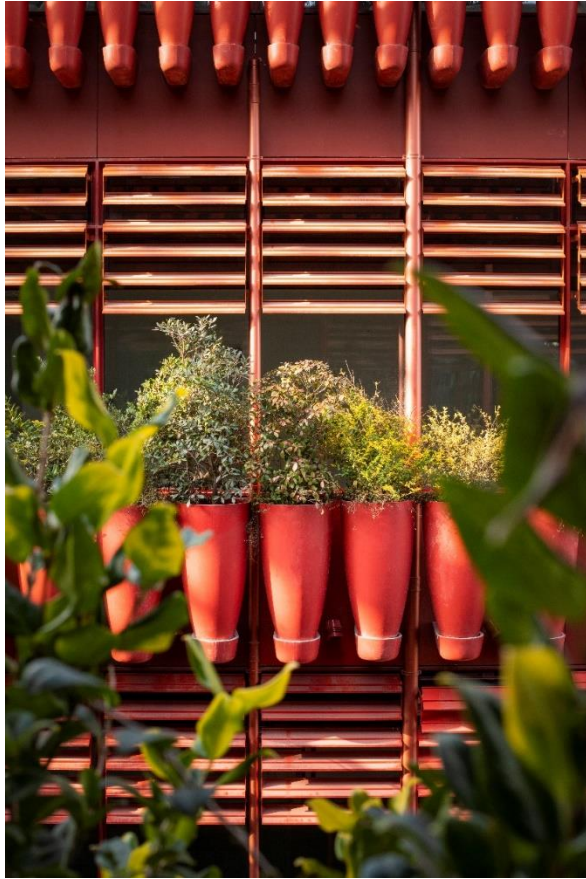
The Roof, Shanghai, China

A bold biophilic break from the mundane, infused with the characteristics of its traditional context. The Roof intricately weaves its surrounding culture into its unique design, creating a model for future city spaces where people and nature thrive and a unique city destination to see and be seen in.

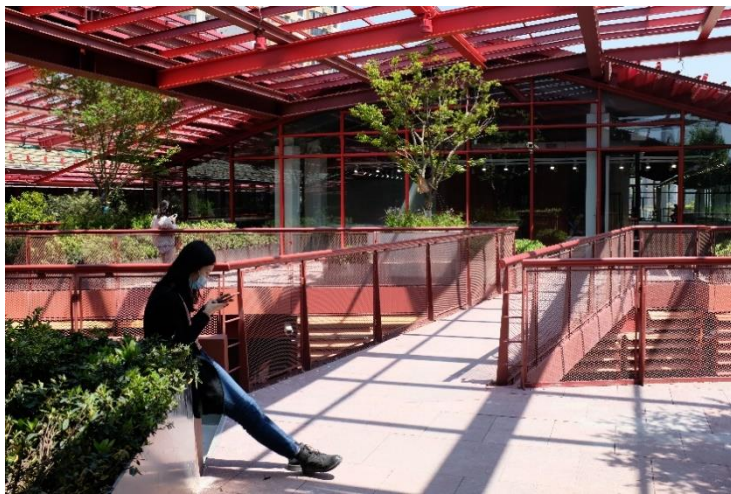
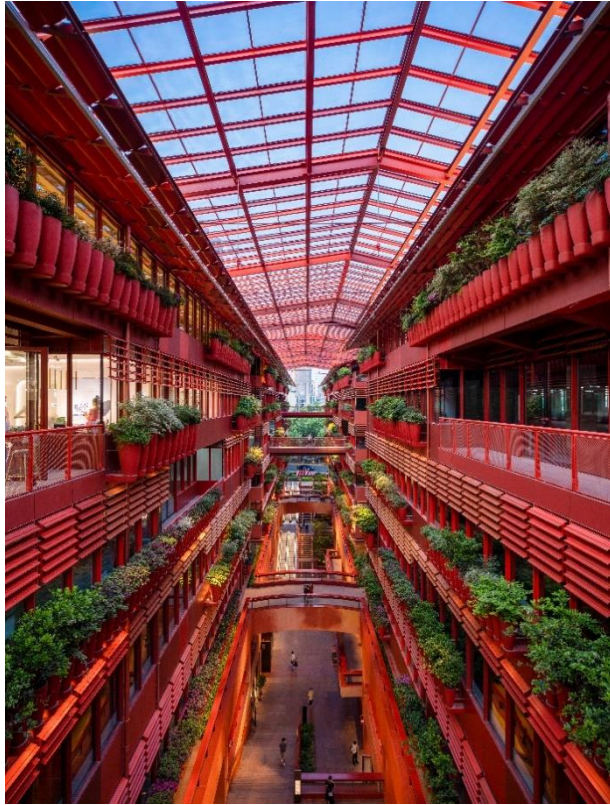


In early 2018 CIFI appointed ASPECT Studios to the project team to deliver the landscape architectural and living facade design of this iconic biophilic landmark in the heart of Shanghai. The process of embracing the project's vision started with an appreciation of the site's context, culture, and community. Being a few blocks away from our Shanghai studio, it is a place we are very familiar with. The design was developed through Concept Design, Schematic Design, Detailed Design and reviewing of the Construction Documentation and On-Site construction.





Shanghai is one of the most iconic, modern, fast paced and densely populated international cities in the world. By taking a step away from the busy streets, into the traditional backstreets (Li'long), you will find a completely different experience where there is much to admire. A place that is quintessential to the soul of Shanghai, with its own unique characteristics, pace of life, community, and culture within the complex 100-year-old historic laneways.

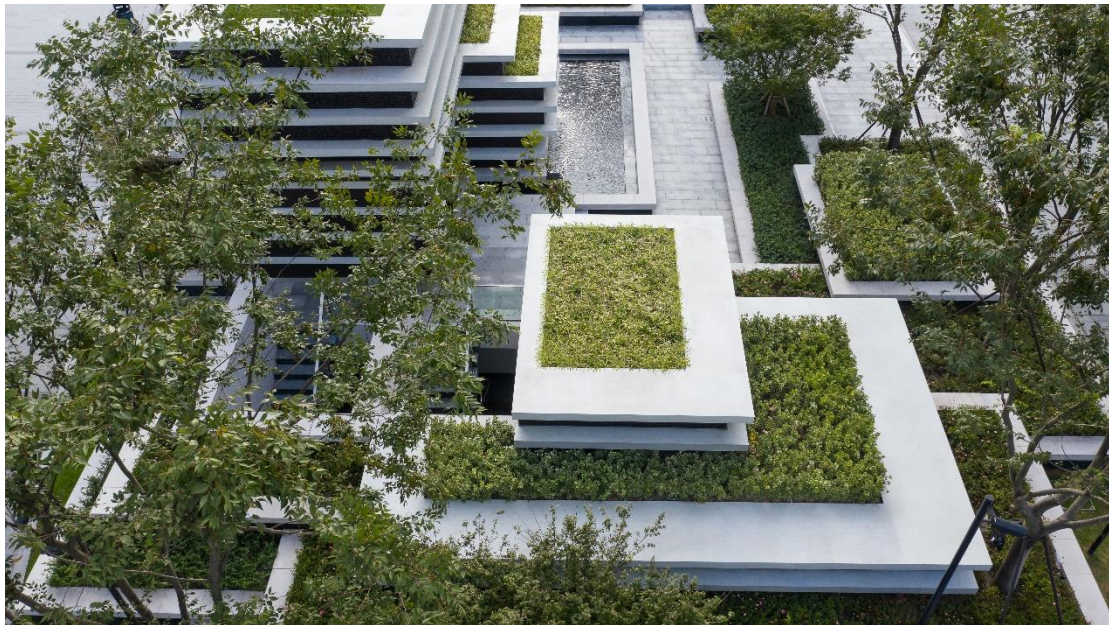


Within the short time since opening The Roof has rapidly become one of the most photographed locations in Shanghai, a place to see and be seen requested by crowds of people coming to experience the three-dimensional immersive experience. Influencer and KOL as the place to be seen with vibrant competition and diversity of spaces, and family capturing moments of delight with their children and relatives.

Photography: Dong Liang

Sunbow Financial Centre, Shanghai, China

A singular, unified response that was flexible and adaptive to mitigate the many constraints. The layered shifting frames navigate, rise, fall and adapt playfully throughout the site to alleviate, conceal and simultaneously embrace these constraints while accommodating trees, shrubs and significant soil build up upon the basement structure. Inverting the negative elements into positive solutions for the project was essential.



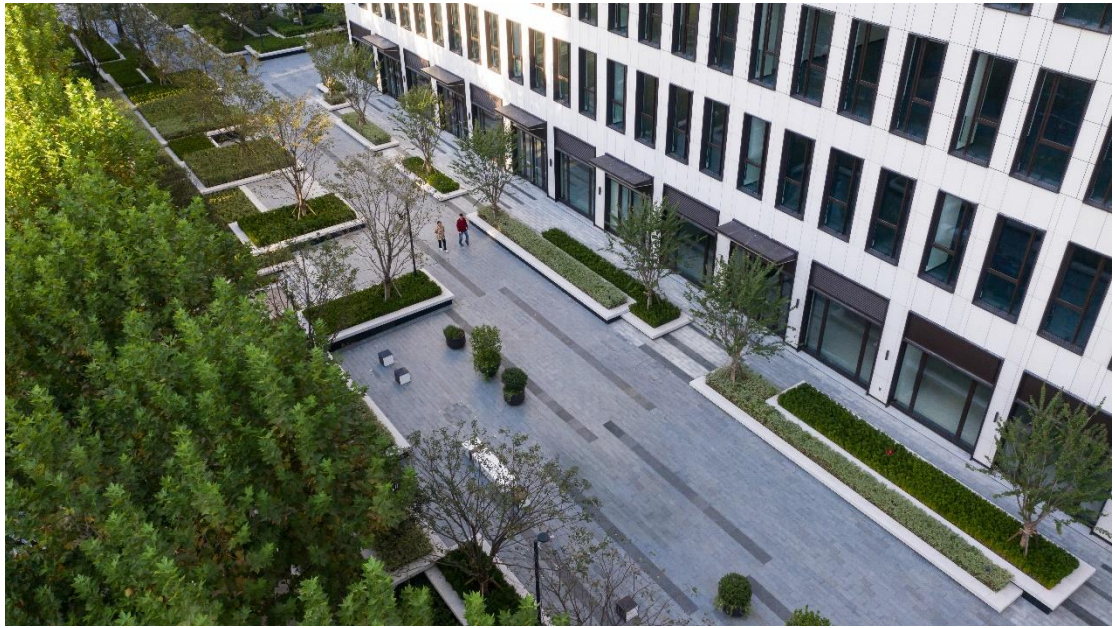
We were briefed to create a refined, yet unique, landscape for the new office community that mitigated the minefield of unsightly constraints. In response to this, we wanted to augment access to plants and greenery, and at the same time provide a space for social interactions and flexibility for future operations. The intent was to enrich the everyday lives of the users, whilst creating a unique environment and identity for the community within its urban setting, ultimately connecting people with nature.

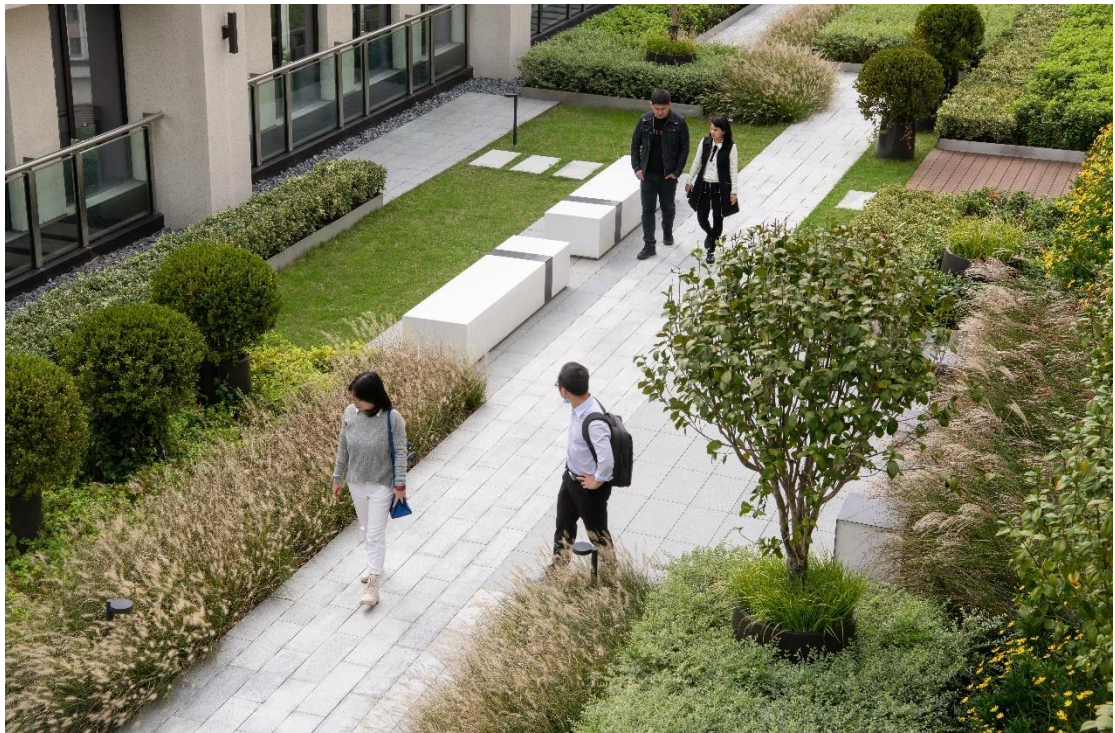


The site is located in the new regeneration district in Pudong adjacent to the Huangpu River, the Sunbow Financial Centre sits at the intersection of Pudong Road and Huafeng Road, conveniently placed in a walkable position to the Shanghai Metro line 6 and 7.



The project consists of two high rise office buildings, a central garden and landscape promenade around the perimeter, with a total site area of over 13,400sqm. The office communities are encompassed with a network of layered social and plated floating frames with curable pockets. Trees and shrubs are set within defined forms generating social gathering spaces and casual seating nodes, with each building hosting their own private social sky gardens.







Photography: Lu Bing

Click here for more exciting projects of [ASPECT Studios](#).