

WANG Xiang-rong

Professor and the Dean of the School of Landscape Architecture, Beijing Forestry University  
Chief Editor of *Landscape Architecture Journal (China)*  
Vice Chief Editor of *Chinese Landscape Magazine*

BOOKS

1. «NOTES OF LANDSCAPE, NATURE CULTURE DESIGN»
2. «URBAN ENVIRONMENT DESIGN-NATURE OF CULTURE»
3. «POLYSEMIOUS LANDSCAPE-THE WORK OF ATELIER DYJG»
4. «THEORIES AND PRACTICE OF MODERN LANDSCAPE ARCHITECTURE IN THE WESTERN WORLD.»
5. «2011 X'an World Horticultural Exposition: MASTER GARDEN»



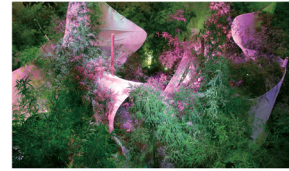
MAGAZINES

1. «CHINESE LANDSCAPE ARCHITECTURE»
2. «LANDSCAPE ARCHITECTURE»

BFU INTERNATIONAL GARDEN FESTIVAL



REPRESENTATIVE PROJECTS  
2003-2018



**Garden of Heart**  
Area: 0.01ha  
Design/Completion: 2012  
Award:  
• Award of Excellence in Landscape Design Category, International Federation of Landscape Architects Asia Pacific Region(IFLA APRI), 2013



**Four Boxes Garden**  
Area: 0.17ha  
Design/Completion: 2010/2011  
Award:  
• Merit Award in Landscape Design Category, International Federation of Landscape Architects Asia Pacific Region(IFLA APRI), 2012  
• National Landscape Awards, British Association of Landscape Industries(BALI), 2012



**Zhuhai Garden**  
Area: 0.17ha  
Design/Completion: 2016-2017/2017  
Award:  
• National Landscape Awards, British Association of Landscape Industries(BALI), 2018  
• Gold Prize of the 12th China(Nanning)International Garden Expo, 2018



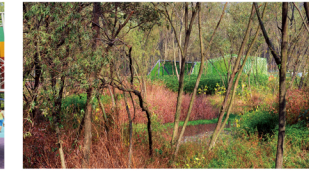
**Renewal of Maple and Azalea Garden**  
Area: 1.4ha  
Design/Completion: 2011/2012  
Award:  
• National Landscape Awards, British Association of Landscape Industries(BALI), 2014  
• First prize of 3rd Landscape Planning and Design Awards, Chinese Society of Landscape Architecture(CHSLA), 2015



**Qinglongshan Cultural Plaza**  
Area: 9ha  
Design/Completion: 2009-2011/2013  
Award:  
• National Landscape Awards, British Association of Landscape Industries(BALI), 2015  
• Second prize of 3rd Landscape Planning and Design Awards, Chinese Society of Landscape Architecture(CHSLA), 2015



**The Renewal of Xiamen Zhongshan Park**  
Area: 11.4ha  
Design/Completion: 2015-2016/2017  
Award:  
• Honor Award in Landscape Planning and Analysis Category, International Federation of Landscape Architects Africa, Asia Pacific and Middle East Regions(IFLA AAPME), 2018



**Jiangyuan Eco-park**  
Area: 19.8ha  
Design/Completion: 2008-2010  
Award:  
• National Landscape Awards, British Association of Landscape Industries(BALI), 2011  
• Award of Excellence in Landscape Management Category, International Federation of Landscape Architects Asia Pacific Region(IFLA APRI), 2013  
• First prize of 2nd Landscape Planning and Design Awards, Chinese Society of Landscape Architecture(CHSLA), 2013



**Xiamen Bay Park**  
Area: 20ha  
Design/Completion: 2003-2004/2006  
Award:  
• Second Prize of Fujian Design Merit Awards, 2008



**The Park in the Hydro-fluctuation on Zone — Yuyang Bridge Park**  
Area: 23.29ha  
Design/Completion: 2014/2017  
Award:  
• Outstanding Award in Landscape Planning and Analysis Category, International Federation of Landscape Architects Africa, Asia Pacific and Middle East Regions(IFLA AAPME), 2018



**Longkou Linyuan Park**  
Area: 24ha  
Design/Completion: 2012-2013/2014  
Award:  
• Excellence Award in Landscape Design Category, International Federation of Landscape Architects Asia Pacific Region(IFLA APRI), 2017  
• National Landscape Awards, British Association of Landscape Industries(BALI), 2016  
• Second prize of "Jicheng" reward of China Engineering and Consulting Association, 2017



**Quarry Gardens in Nanning Garden EXPO Park**  
Area: 30ha  
Design/Completion: 2016-2018/2018



**Jinan Daming Lake and the Moat**  
Area: 14.7ha  
Design/Completion: 2007/2010



**Shangxianhe Wetland Park**  
Area: 210ha  
Design/Completion: 2007-2009/2011  
Award:  
• Second prize of 2nd Landscape Planning and Design Awards, Chinese Society of Landscape Architecture(CHSLA), 2013



**Revival of Resilient Canal Network, Ningbo**  
Area: 210ha  
Design: 2015  
Award:  
• Outstanding Award in Landscape Planning and Analysis Category, International Federation of Landscape Architects Africa, Asia Pacific and Middle East Regions(IFLA AAPME), 2018

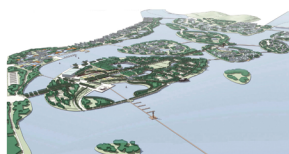


**Hangzhou Xianghu Planning**  
Area: 645ha  
Design/Completion: 2004-2010/2011



ACADEMIC REPORTS

- Report in Stuttgart, Germany (2008)
- Exhibition in Stuttgart, Germany (2008)
- Report in the University of Hong Kong, China (2008)
- Report in the China, Japan and Korea Landscape Architecture Symposium (2010)
- Report in the University of Kassel, Germany (2013)
- Session Discussion with Peter Walker and Martha Schwartz in the Beijing Landscape Architecture Symposium, Beijing (2013)
- Report in International Biennial of Landscape Architecture Barcelona (2014)
- Report in the Annual Meeting of Chinese Society of Landscape Architecture (2015)
- Report in World Landscape Architecture Symposium (2015-2017)
- Report in Council of Educators in Landscape Architecture (2016)
- Report in the Annual Meeting of British Landscape Architecture Association (2017)
- Report in the International Landscape Architecture Symposium (2018)
- Report in the University of Chicago, USA (2018)



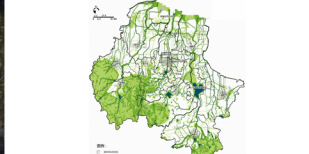
**2017 Xiamen International Garden Show Park**  
Area: 670ha  
Design/Completion: 2004-2007  
Award:  
• Honor Award in Analysis and Planning, American Society of Landscape Architects(ASLA), 2007



**Remodelling Paradise-Landscape Renovation Planning of the round West Lake Region in Hangzhou**  
Area: 760ha  
Design/Completion: 2001-2003  
Award:  
• President's Award in Landscape Planning, International Federation of Landscape Architects Asia Pacific Region(IFLA APRI), 2011  
• Honor Award in Analysis and Planning, American Society of Landscape Architects(ASLA), 2010



**Emerald Necklace-Green Ring Planning Based on Jiming Coal Mining Subsidence Area**  
Area: 2000ha  
Design: 2017  
Award:  
• Outstanding Award in Landscape Planning and Analysis Category, International Federation of Landscape Architects Africa, Asia Pacific and Middle East Regions(IFLA AAPME), 2018



**The Green Network Based on Weifang Water System**  
Area: 1610000ha  
Design: 2012-2014  
Award:  
• Outstanding Award in Landscape Planning and Analysis Category, International Federation of Landscape Architects Asia Pacific Region(IFLA APRI), 2017  
• Second prize of 3rd Landscape Planning and Design Awards, Chinese Society of Landscape Architecture(CHSLA), 2015

